

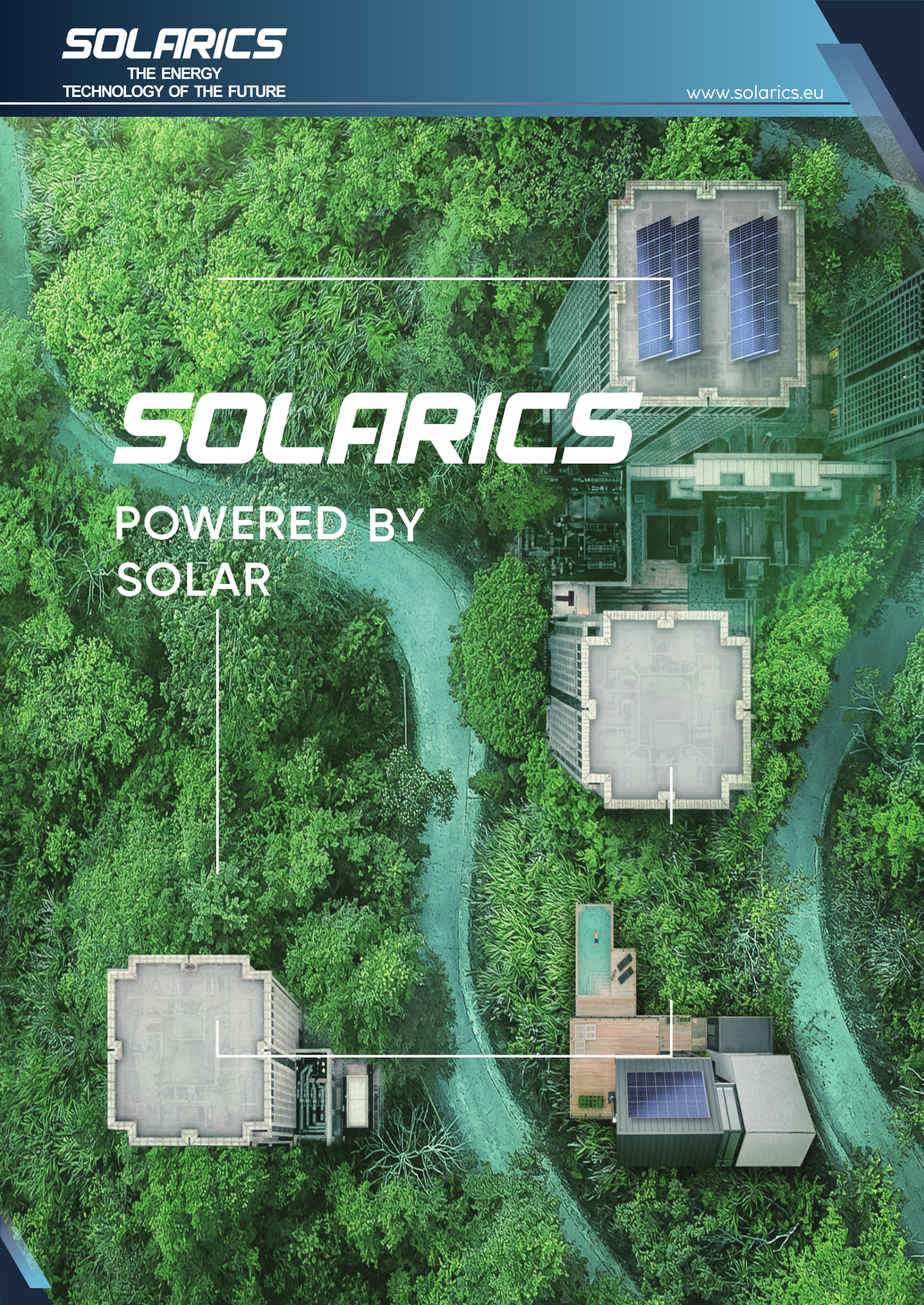
SOLARICS

THE ENERGY
TECHNOLOGY OF THE FUTURE

www.solarics.eu

SOLARICS

POWERED BY
SOLAR

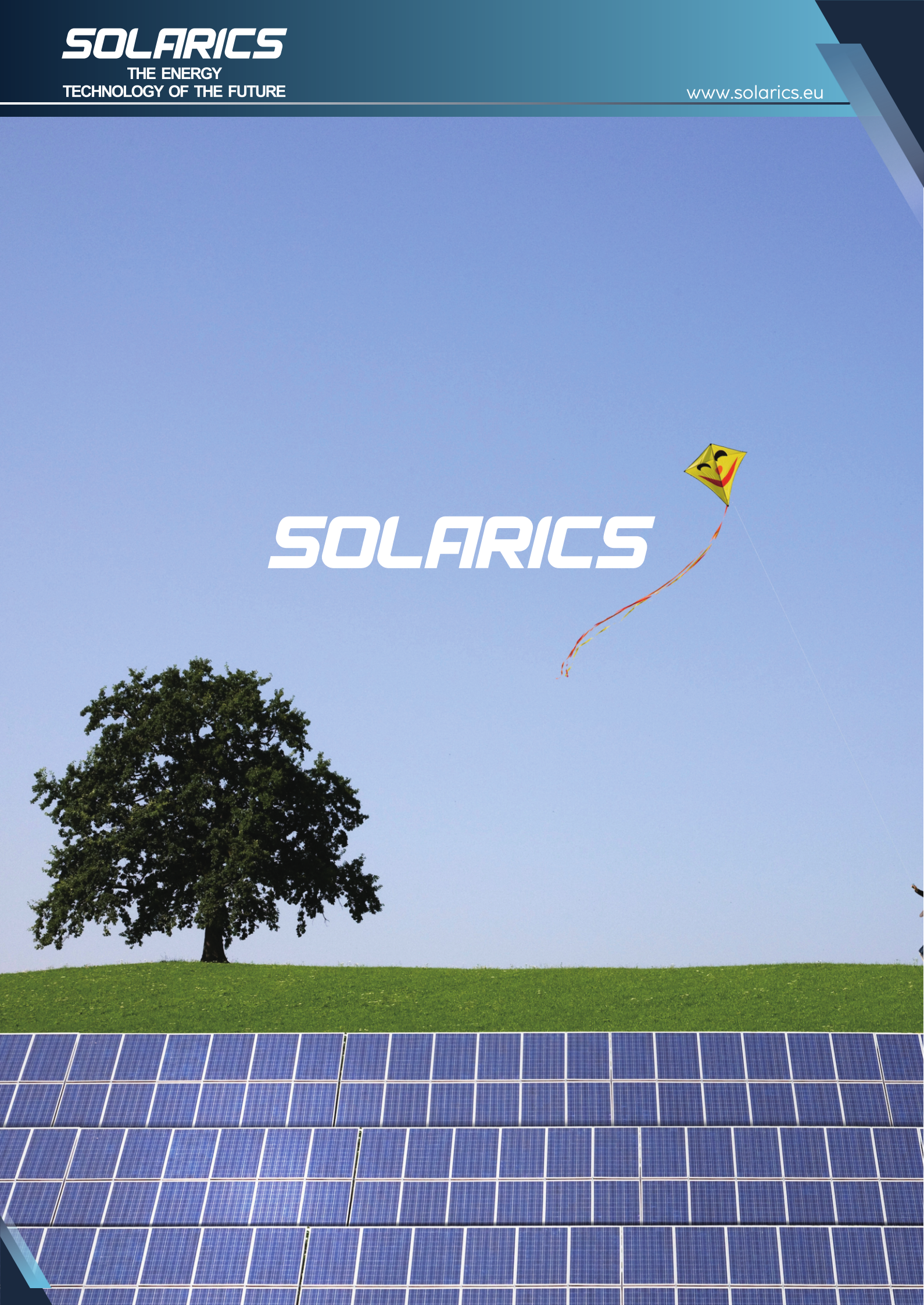


SOLARICS

THE ENERGY
TECHNOLOGY OF THE FUTURE

www.solarics.eu

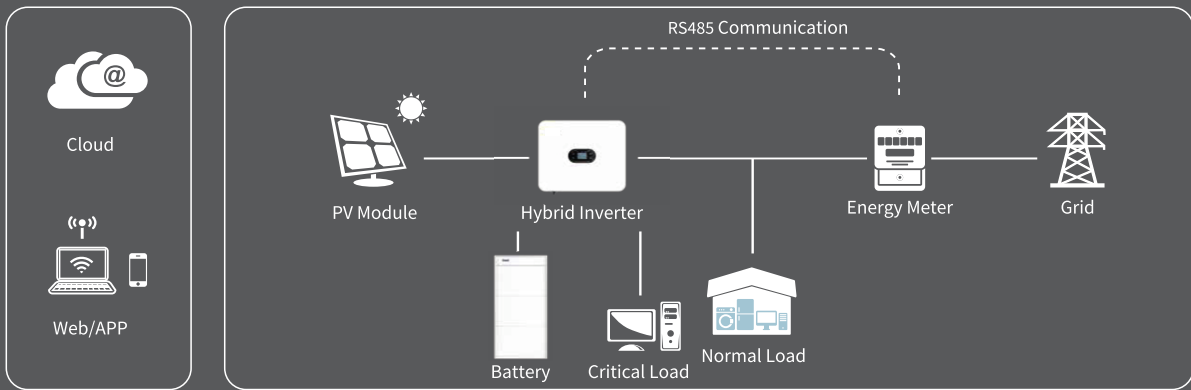
SOLARICS



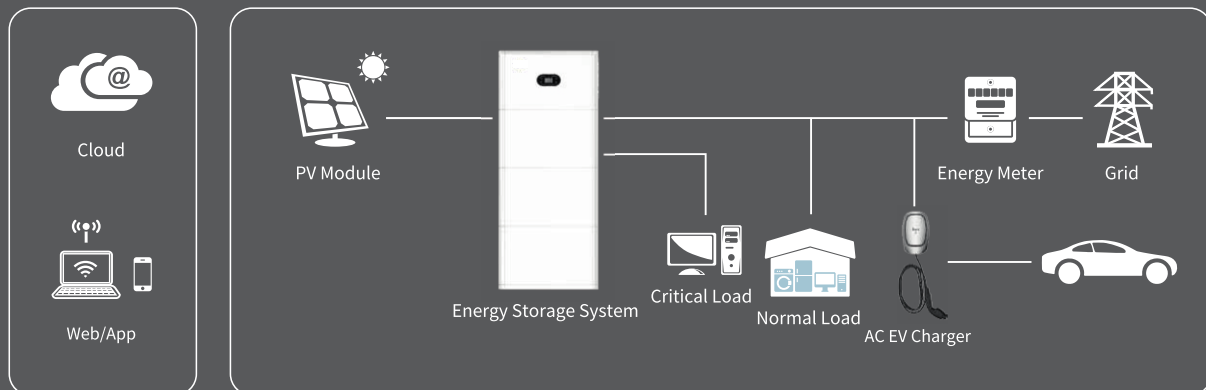
SOLARICS

Energy Storage Solution

Residential Storage System



Smart Home Energy Storage Solution



SOLARICS

Single Phase Hybrid Inverter

XD3-6KTL



**Efficient
Higher Revenue**

- Max. Efficiency 97.5%
- Max. PV Input Voltage 600V
- 150% Peak Output Power
- 2 MPP Trackers, 150% DC Input Oversizing
- Max. PV Input Current 16A, Compatible with High Power Modules



**Intelligent
Simple O&M**

- IP66 Protection Degree: support outdoor installation
- Smart I-V Curve Diagnosis Function: locate PV string faults accurately and automatically detect faults
- DC & AC Type II SPD: prevent lightning damage
- Battery Reverse Connection Protection



**Flexible
Abundant Configuration**

- Plug & Play, EPS Switching Under 10ms
- Compatible with Lead-acid and Lithium Batteries
- Supports multiple units in parallel
- AFCI Function (Optional): when an arc-fault is detected the inverter immediately stops operation

	XD3KTL	XD3K6TL	XD4KTL	XD4K6TL	XD5KTL	XD6KTL
Input (PV)						
Max. PV Input Power	4.5kW	5.4kW	6kW	6.9kW	7.5kW	9kW
Max. PV Input Voltage	600V					
Start-up Voltage	100V					
Rated Voltage	360V					
MPPT Voltage Range	100V ~ 550V					
Number of MPP Trackers	2					
Number of String per MPPT	1 / 1					
Max. Current per MPPT	16A					
Max. Short Circuit Current per MPPT	24A					
Output (AC)						
Rated Output Power	3kVA	3.68kVA	4kVA	4.6kVA	5kVA	6kVA
Max. Output Power	3.3kVA	3.68kVA	4.4kVA	4.6kVA	5.5kVA	6kVA
Max. Output Current	15A	16A	20A	20.9A	22.7A	27.3A
Rated Voltage	230V					
Rated Frequency	50Hz / 60Hz					
THDi(@Rated Power)	< 3%					
Power Factor	0.8 leading ~ 0.8 lagging					
Output (EPS)						
Max. Output Power	3kVA	3.68kVA	4kVA	4.6kVA	5kVA	6kVA
Max. Output Current	15A	16A	20A	20.9A	22.7A	27.3A
Peak Output Power, Time	4.5kW,10s	5.5kW, 10s	6kW, 10s	6.9kW, 10s	7.5kW, 10s	7.5kW, 10s
Rated Voltage, Frequency	230V, 50Hz					
THDv (@Rated Power)	< 3%					
Switch Time	< 10ms					
Battery						
Battery Type	Lithium, Lead-acid					
Battery Voltage Range	40V ~ 60V					
Max. Charge / Discharge Current	100A					
Communication	CAN					
Efficiency						
Max. Efficiency	97.50%					
EU Efficiency	97.20%					
Battery Charge / Discharge Efficiency	95.00%					
Protection						
DC Switch	Yes					
DC Reverse Polarity Protection	Yes					
Anti-islanding Protection	Yes					
AC Short Circuit Protection	Yes					
Residual Current Monitoring	Yes					
Insulation Resistance Monitoring	Yes					
Ground Fault Monitoring	Yes					
Over Current / Voltage Protection	Yes					
Battery Soft Start Protection	Yes					
Surge Protection	Type II					
AFCI Protection	Optional					
Communication						
Display	LCD					
Communication	RS485 / CAN / WIFI / 4G / LAN / Bluetooth					
Standard Compliance						
Certification	IEC/EN 62109-1/2, IEC/EN 61000-6-1/3, IEC61727/IEC62116, EN50549, CEI0-21, C10/C11, VDE4105, VDE0126, G98/99, RD244, UNE217001, UNE217002, AS4777, NRS097-2-1					
General Data						
Dimension (W x H x D)	490 x 395 x 200 mm					
Weight	20kg					
Operating Temperature Range	-30°C ~ +60°C					
Cooling Method	Natural					
Protection Degree	IP66					
Max. Operating Altitude	4000m					
Noise	≤ 25dB					
Relative Humidity	0~100%					
Self-consumption	< 10W					
Topology	High Frequency Insolation (For battery)					

SOLARICS
Three Phase Hybrid Inverter
XD5-12KTR



**Efficient
Higher Revenue**

- 160% DC input oversizing, Max. PV input current 20A
- Max. charge/discharge current 50A
- 110% output power oversizing, 200% peak output power



**Intelligent
Simple O&M**

- Smart I-V Curve Diagnosis Function: locate PV string faults accurately and automatically detect faults
- IP66 protection: support outdoor installation
- DC & AC type II SPD: prevent lightning damage



**Flexible
Abundant Configuration**

- Plug & play, EPS switching under 10ms
- AFCI function (optional): when an arc-fault is detected the inverter immediately stops operation
- Multiple working modes

	XD5KTR	XD6KTR	XD8KTR	XD10KTR	XD12KTR
Input (PV)					
Max. Input Power	8kW	9.6kW	12.8kW	16kW	19.2kW
Max. Input Voltage			1100V		
Start-up Voltage			160V		
Rated Voltage			600V		
MPPT Voltage Range			150V~1000V		
Number of MPP Trackers			2		
Number of String per MPPT			1 / 1		
Max. Current per MPPT			20A		
Max. Short Circuit Current per MPPT			40A		
Output (AC)					
Rated Output Power	5kVA	6kVA	8kVA	10kVA	12kVA
Max. Output Power	5.5kVA	6.6kVA	8.8kVA	11kVA	13.2kVA
Max. Output Current	7.2A	8.7A	11.6A	14.5A	17.4A
Rated Grid Voltage			230Vac / 400Vac		
Rated Grid Frequency			50Hz / 60Hz		
THDi(@Rated Power)			< 2%		
Power Factor			0.8 leading ~ 0.8 lagging		
Output (EPS)					
Max. Output Power	5.5kVA	6.6kVA	8.8kVA	11kVA	13.2kVA
Peak Output Power, Time	10kW, 60s	12kW, 60s	16kW, 60s	20kW, 60s	20kW, 60s
Rated Voltage, Frequency			230V / 400V, 50Hz		
THDv(@Rated Power)			< 3%		
Switch Time			< 10ms		
Battery					
Battery Type			Lithium / Lead-acid		
Battery Voltage Range			120V ~ 600V		
Max. Charge / Discharge Current			50A		
Communication			CAN / RS485		
Efficiency					
Max. Efficiency	98.20%				98.40%
European Efficiency	97.60%				97.80%
Battery Charge / Discharge Efficiency	97.60%				97.80%
Protection					
DC Switch			Yes		
DC Reverse Polarity Protection			Yes		
Anti-islanding Protection			Yes		
AC Short Circuit Protection			Yes		
Residual Current Monitoring			Yes		
Insulation Resistance Monitoring			Yes		
Ground Fault Monitoring			Yes		
Over Current / Voltage Protection			Yes		
I-V Curve Scan			Yes		
Battery Soft Start Protection			Yes		
Surge Protection			Type II		
AFCI Protection			Optional		
Communication					
Display			LCD		
Communication			RS485 / CAN / WIFI / 4G / LAN / Bluetooth		
General Data					
Dimension (W x H x D)			534 x 440 x 220 mm		
Weight			<30kg		
Operating Temperature Range			-30°C~ +60°C		
Cooling Method			Natural		
Protection Degree			IP66		
Max. Operating Altitude			4000 m		
Noise			< 35dB		
Relative Humidity			0~100%		
Self-consumption			< 10W		
Topology			Transformerless		

SOLARICS

Energy Storage System

XD3-6KTL-AIO



**Efficient
Higher Revenue**

- Max. efficiency 97.5%
- 2 MPP trackers, 160% DC input oversizing
- Max. charging/discharging current 100A for faster power backup
- Max. PV input current 16A, compatible with high-power modules



**Reliable
Worry-Free**

- DC & AC Type II SPD: prevent lightning damage
- High ingress protection rating of IP65: supports outdoor installation
- Smart I-V Curve Diagnosis Function: locate PV string faults accurately and automatically detect faults
- EPS Switching Under 10ms, UPS-level switching



**Flexible
Abundant Configuration**

- Easy-install, quick-stack design
- Modular design allows for scalability and customization
- Multiple working modes and support parallel access to PV, batteries, normal loads, EV chargers, and grids
- Support RS485/CAN/WiFi/4G/LAN/Bluetooth optional: remote monitoring and operation via PC or mobile phones



Input (Battery)

Battery Type	LFP					
Battery Energy	5.12kWh	10.24kWh	15.36kWh			
Number of Batteries	1	2	3			
Dimension (W x H x D)	640 x 875 x 210 mm	640 x 1250 x 210 mm	640 x 1625 x 210 mm			
Battery Voltage	51.2V					
Voltage Range	43.2V ~ 56.16V					
Max. Charging / Discharging Current	100A					

Inverter Module	XD3KTL-AIO	XD3K6TL-AIO	XD4KTL-AIO	XD4K6TL-AIO	XD5KTL-AIO	XD6KTL-AIO
-----------------	------------	-------------	------------	-------------	------------	------------

Input (PV)

Max. PV Input Power	4.5kW	5.4kW	6kW	6.9kW	7.5kW	9kW
Max. PV Input Voltage	600V					
Start-up Voltage	100V					
MPPT Voltage Range	100V ~ 550V					
Number of MPP Trackers / String per MPPT	2 / 1					
Max. PV Input Current	16A					
Max. Short Circuit Current per MPPT	24A					

Output (AC)

Rated Output Power	3kW	3.68kW	4kW	4.6kW	5kW	6kW
Max. Output Power	3.3kVA	3.68kVA	4.4kVA	4.6kVA	5.5kVA	6kVA
Max. Output Current	15A	16A	20A	20.9A	22.7A	26.1A
Rated Voltage	230V					
Rated Frequency	50Hz / 60Hz					
THDi(@Rated Power)	< 3%					
Power Factor	0.8 leading ~ 0.8 lagging					

Output (EPS)

Max. Output Power	3kVA	3.68kVA	4kVA	4.6kVA	5kVA	6kVA
Max. Output Current	15A	16A	20A	20.9A	22.7A	30A
Peak Output Power, Time	4.5kW, 10s	5.5kW, 10s	6kW, 10s	6.9kW, 10s	7.5kW, 10s	7.5kW, 10s
Rated Voltage, Frequency	230V, 50Hz					
THDv(@Rated Power)	< 3%					
Switch Time	< 10ms					

Efficiency

Max. Efficiency	97.50%					
EU Efficiency	97.20%					
Max. Battery Charge/Discharge Efficiency	95.00%					

Protection

Protection	DC Reverse Polarity Protection, Insulation Resistance Monitoring, Ground Fault Monitoring, Over Current / Over Voltage Protection, Battery Soft Start Protection					
AFCI Protection	Optional					
Surge Protection	Type II					

General Data

Operating Temperature Range	-10°C ~ +45°C					
Self-consumption	< 10W					
Protection Degree	IP65					
Relative Humidity	0 ~ 100%					
Display	LCD					
Communication	RS485 / CAN / WIFI / 4G / LAN / Bluetooth					
Max. Operating Altitude	4000m					
Cooling Method	Natural					

SOLARICS

GRP5.12-WLV

Low Voltage Battery



Easy Install

• Easy installation, plug and play design



Flexible

• Flexible capacity, Max.15pcs in parallel to extend capacity



Reliable

• Safe & reliable, Lithium Iron Phosphate (LFP) Cell



Smart O&M

• LED Display, SOC, Battery state

GRP5.12-WLV

Battery Parameter

Battery Cell	LiFePO ₄
Battery Energy	5120Wh
Nominal Capacity	100Ah
Depth of Discharge	80%
Nominal Voltage	51.2V
Voltage Range	43.2Vdc ~ 56.6Vdc
Nominal Charge / Discharge Current	50A
Max. Charge/Discharge Current	100A
Dimension (W x H x D)	520 x 470 x 141.5 mm
Weight	47.2kg
Installation	Wall-mounted / Floor-standing
Temperature of Charge	0 ~ 55°C
Temperature of Discharge	-20°C ~ +60°C
Protection Degree	IP65
Parallel Units	Up to 15
Communication Port	RS485, CAN
Display	LED
Operation Humidity	5% ~ 95%
Max. Operating Altitude	2000m
Cycle Life	6000@80% DOD, 25°C , 0.5C
Certification	CE, IEC, UN38.3, MSDS

SOLARICS

Low Voltage Battery

GRP5.12-SLV



Easy Install

- Modular design, simplifies transport and installation



Wide TEMP

- Excellent temperature performance, temperature of discharge @-20°C ~ +60°C



Reliable

- Cobalt Free Lithium Iron Phosphate (LFP) Battery: maximum safety and life cycle



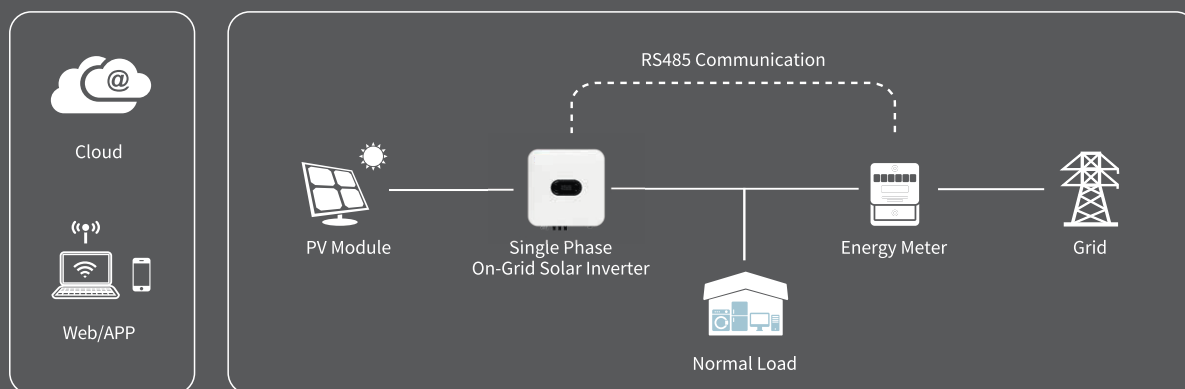
Flexible

- Capable of high-powered emergency-backup and Off-Grid function

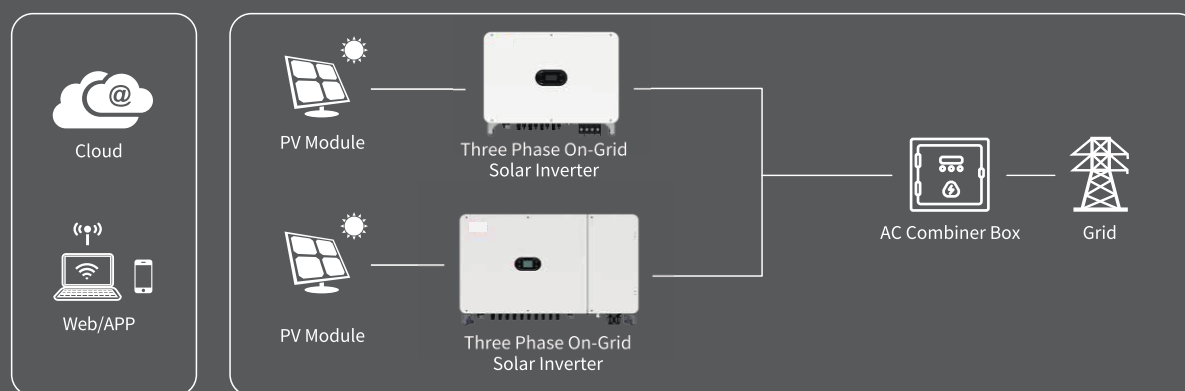
	GRP5.12-S2LV	GRP5.12-S3LV	GRP5.12-S4LV
Battery Parameter			
Battery Cell	LiFePO ₄		
Battery System Capacity	10.24kWh	15.36kWh	20.48kWh
Module Number	2	3	4
Nominal Capacity	200Ah	300Ah	400Ah
Depth of Discharge	80%		
Nominal Voltage	51.2V		
Voltage Range	43.2Vdc ~ 56.16Vdc		
Nominal Charge / Discharge Current	100A		
Dimension (W x H x D)	640 x 890 x 200 mm	640 x 1255 x 200 mm	640 x 1620 x 200 mm
Weight	119kg	167kg	215kg
Installation	Stacked		
Temperature of Charge	0 ~ 55°C		
Temperature of Discharge	-20°C ~ +60°C		
Protection Degree	IP65		
Communication Port	RS485, CAN		
Display	LED		
Operation Humidity	5% ~ 95%		
Max. Operating Altitude	2000m		
Cycle Life	6000@80% DOD, 25°C , 0.5C		
Certification	CE, IEC, UN38.3, MSDS		

On-Grid PV Solution

Residential On-grid PV Solution



Commercial On-grid PV Solution



SOLARICS

Low Voltage Battery

GRP5.12-SLV



Easy Install

- Modular design, simplifies transport and installation



Wide TEMP

- Excellent temperature performance, temperature of discharge @-20°C ~ +60°C



Reliable

- Cobalt Free Lithium Iron Phosphate (LFP) Battery: maximum safety and life cycle



Flexible

- Capable of high-powered emergency-backup and Off-Grid function

	GRP5.12-S2LV	GRP5.12-S3LV	GRP5.12-S4LV
Battery Parameter			
Battery Cell	LiFePO ₄		
Battery System Capacity	10.24kWh	15.36kWh	20.48kWh
Module Number	2	3	4
Nominal Capacity	200Ah	300Ah	400Ah
Depth of Discharge	80%		
Nominal Voltage	51.2V		
Voltage Range	43.2Vdc ~ 56.16Vdc		
Nominal Charge / Discharge Current	100A		
Dimension (W x H x D)	640 x 890 x 200 mm	640 x 1255 x 200 mm	640 x 1620 x 200 mm
Weight	119kg	167kg	215kg
Installation	Stacked		
Temperature of Charge	0 ~ 55°C		
Temperature of Discharge	-20°C ~ +60°C		
Protection Degree	IP65		
Communication Port	RS485, CAN		
Display	LED		
Operation Humidity	5% ~ 95%		
Max. Operating Altitude	2000m		
Cycle Life	6000@80% DOD, 25°C , 0.5C		
Certification	CE, IEC, UN38.3, MSDS		

SOLARICS
Single Phase On-Grid Solar Inverter
XG3-10KTL



**Efficient
Higher Revenue**

- 2 MPP Trackers , Max. input current per string: 20A
- 150% DC Input Oversizing
- Compatible with high power modules



**Intelligent
Simple O&M**

- Smart I-V Curve Diagnosis Function: locate PV string faults accurately and automatically detect faults
- Intelligent Fault Detection: AC side voltage and current waveforms real-time recorded, fast fault location
- Support RS485/WiFi/4G: remote monitoring and operation via PC or mobile phones



**Reliable
Worry Free**

- IP66 Protection Degree: support outdoor installation
- AFCI Function (Optional): when an arc-fault is detected the inverter immediately stops operation

	XG3KTL-2M	XG3.68KTL	XG4KTL	XG4.2KTL	XG4.6KTL	XG5KTL	XG6KTL	XG7KTL	XG8KTL	XG10KTL	XG7KTL1	XG8KTL1	XG10KTL1
--	-----------	-----------	--------	----------	----------	--------	--------	--------	--------	---------	---------	---------	----------

Input (DC)

Max. Input Power	4.5kW	5.52kW	6kW	6.3kW	6.9kW	7.5kW	9kW	10.5kW	12kW	15kW	10.5kW	12kW	15kW
Max. Input Voltage	600V												
Start Voltage	80V												
Rated Input Voltage	360V												
MPPT Voltage Range	50V ~ 550V												
Number of MPP Trackers	2												
Number of String per MPPT	1 / 1										1 / 2		
Max. Current per MPPT	20A										14A / 28A		
Max.ShortCircuitCurrentperMPPT	26A										18.2A / 36.4A		

Output (AC)

Max. Output Current	15A	16A	20A	21A	23A ^d	25A ^d	30A	35A	40A	45.5A	35A	40A	45.5A
Rated Output Power	3kW	3.68kW	4kW	4.2kW	4.6kW	5kW ^a	6kW	7kW	8kW	10kW	7kW	8kW	10kW
Max. Output Power	3.3kVA	3.68kVA	4.4kVA	4.62kVA	5kVA ^b	5.5kVA ^c	6.6kVA	7.7kVA	8.8kVA	10kVA	7.7kVA	8.8kVA	10kVA
Rated Grid Frequency	50Hz / 60Hz												
Rated Grid Voltage	220Vac / 230Vac / 240Vac												
Power Factor	>0.99 (0.8 leading ~ 0.8 lagging)												
THDi	<3% (Rated Power)												

Efficiency

Max. Efficiency	98.10%			98.30%				98.10%					
European Efficiency	97.30%			97.40%				97.30%					
MPPT Efficiency	99.90%												

Protection

DC switch	Optional												
DC Reverse Polarity Protection	Yes												
Anti-islanding Protection	Yes												
AC short Circuit Protection	Yes												
Residual Current Monitoring Unit	Yes												
Insulation Resistance Monitoring	Yes												
Ground Fault Monitoring	Yes												
Grid Monitoring	Yes												
PV String Monitoring	Yes												
Surge Protection	Yes												
AFCI Protection	Optional												

Communication

Display	LCD / LED+APP												
Communication	RS485 / WiFi / 4G												

Standard Compliance

Certification	IEC/EN 62109-1/2, IEC/EN 61000-6-1/3, EN50549, IEC61727/IEC62116, CEI0-21, C10/C11, G98/G99, RD244, UNE217001, UNE217002, TOR Erzeuger, AS4777, ABNT, NB/T 32004												
---------------	--	--	--	--	--	--	--	--	--	--	--	--	--

General Data

Dimensions (W x H x D)	380 x 380 x 160 mm												
Weight	13kg												
Operating Temperature Range	-30° C ~ +60° C												
Cooling Method	Natural										Smart Cooling		
Protection Degree	IP66												
Max. Operating Altitude	4000m												
Relative Humidity	0 ~ 100%												
Topology	Transformerless												
Night Power Consumption	<1W												

● a: For AS4777, Rated Output Power of XG5KTL is 4999W .

● b: For VDE-AR-N 4105 , Max . Output Power of XG4K6TL is 4600VA . For AS4777, Max . Output Power of XG4K6TL is 4999VA .

● c: For AS4777, Max. Output Power of XG5KTL is 4999VA .

● d: For AS4777, Max . Output Current of XG4K6TL and XG5KTL is 21.7A .

SOLARICS

Three Phase On-Grid Solar Inverter

XG3-15KTR-S



Efficient Higher Revenue

- 2MPP Trackers, high single circuit tracking accuracy, fast dynamic response
- 160% DC Input Oversizing
- Wide MPPT voltage range: 180V-1000V
- Compatible with high power modules



Intelligent Simple O&M

- Smart I-V Curve Diagnosis Function: locate PV string faults accurately and automatically detect faults
- Intelligent Fault Detection: AC side voltage and current waveforms real-time recorded, fast fault location
- Support RS485 (WiFi/GPRS/Ethernet optional): remote monitoring and operation via PC or mobile phones



Reliable Worry Free

- IP66 Protection degree: support outdoor installation
- DC & AC Type II SPD: prevent lightning damage
- AFCI Function (Optional): when an arc-fault is detected the inverter immediately stops operation

	XG3KTR-S	XG4KTR-S	XG5KTR-S	XG6KTR-S	XG8KTR-S	XG9KTR-S	XG10KTR-S	XG11KTR-S	XG12KTR-S	XG15KTR1-S
Input (DC)										
Max. Input Power	4.8kW	6.4kW	8kW	9.6kW	12.8kW	14.4kW	16kW	17.6kW	19.2kW	24kW
Max. Input Voltage	1100V									
Start Voltage	200V									
Rated Input Voltage	600V									
MPPT Voltage Range	180V ~ 1000V									
Number of MPP Trackers / String per MPPT	2 / 1									
Max. Current per MPPT	18A									
Max. Short Circuit Current per MPPT	25A									
Output (AC)										
Max. Output Current	4.8A	6.4A	8A	9.6A	12.8A	14.4A	15.9A	17.5A	19.1A	23.9A
Rated Output Power	3kW	4kW	5kW	6kW	8kW	9kW	10kW	11kW	12kW	15kW
Max. Output Power	3.3kVA	4.4kVA	5.5kVA	6.6kVA	8.8kVA	9.9kVA	11kVA	12.1kVA	13.2kVA	16.5kVA
Rated Grid Frequency	50Hz / 60Hz									
Rated Grid Voltage	230Vac / 400Vac, 3L / N / PE									
Power Factor	>0.99 (0.8 leading ~ 0.8 lagging)									
THDi	<3% (Rated Power)									
Efficiency										
Max. Efficiency	98.40%				98.70%					
European Efficiency	98.30%				98.50%					
MPPT Efficiency	99.90%									
Protection										
DC Reverse Polarity Protection	Yes									
Anti-islanding Protection	Yes									
AC short Circuit Protection	Yes									
Residual Current Monitoring Unit	Yes									
Insulation Resistance Monitoring	Yes									
Ground Fault Monitoring	Yes									
Grid Monitoring	Yes									
Surge Protection	Type II									
AFCI Protection	Optional									
Communication										
Display	LCD / LED+APP									
Communication	Standard: RS485 Optional: WiFi / GPRS / Ethernet									
Standard Compliance										
Certification	IEC/EN 62109-1/2, IEC/EN 61000-6-1/3, IEC61683, IEC60068, IEC61727/IEC62116, EN50549, CEI0-21, C10/C11, VDE 4105, VDE 0124, G98/G99, RD244, UNE217001, UNE217002, NC RfG, TOR Erzeuger, AS4777, ABNT, NB/T 32004, BIS									
General Data										
Dimensions (W x H x D)	481 x 395 x 195 mm									
Weight	12kg				13.5kg					
Operating Temperature Range	-30° C ~ +60° C									
Cooling Method	Natural								Smart Cooling	
Protection Degree	IP66									
Max. Operating Altitude	4000m									
Relative Humidity	0 ~ 100%									
Topology	Transformerless									
Night Power Consumption	<1W									

SOLARICS

Three Phase On-Grid Solar Inverter

XG17-25KTR



Efficient Higher Revenue

- 2 MPP Trackers, high single circuit tracking accuracy, fast dynamic response
- 160% DC Input Oversizing
- Maximum efficiency 98.4%. Wide MPPT voltage range: 200V-1000V
- Compatible with high power modules.



Intelligent Simple O&M

- Smart I-V Curve Diagnosis Function: locate PV string faults accurately and automatically detect faults
- Intelligent Fault Detection: AC side voltage and current waveforms real-time recorded, fast fault location
- Support RS485 (WiFi/GPRS/Ethernet optional): remote monitoring and operation via PC or mobile phones



Reliable Worry Free

- IP66 Protection degree: support outdoor installation
- DC & AC Type II SPD: prevent lightning damage
- AFCI Function (Optional): when an arc-fault is detected the inverter immediately stops operation

	XG17KTR	XG20KTR	XG22KTR	XG25KTR
Input (DC)				
Max. Input Power	27.2kW	32kW	35.2kW	40kW
Max. Input Voltage	1100V			
Start Voltage	250V			
Rated Input Voltage	600V			
Full-load MPP Voltage Range	480V ~ 800V		520V ~ 800V	560V ~ 800V
MPPT Voltage Range	200V ~ 1000V			
Number of MPP Trackers	2			
Number of string per MPPT	2 / 2		2 / 3	
Max. Current per MPPT	32A		32A / 48A	
Max. Short Circuit Current per MPPT	40A		40A / 60A	
Output (AC)				
Max. Output Current	27.2A	32.1A	35.3A	39.8A
Rated Output Power	17kW	20kW	22kW	25kW
Max. Output Power	18.8kVA	22.2kVA	24.4kVA	27.5kVA
Rated Grid Frequency	50Hz / 60Hz			
Rated Grid Voltage	230Vac / 400Vac, 3L / N / PE			
Power Factor	>0.99 (0.8 leading ~ 0.8 lagging)			
THDi	<3% (Rated Power)			
Efficiency				
Max. Efficiency	98.40%			
European Efficiency	98.00%			
MPPT Efficiency	99.90%			
Protection				
DC Reverse Polarity Protection	Yes			
Anti-islanding Protection	Yes			
AC Short Circuit Protection	Yes			
Residual Current Monitoring Unit	Yes			
Insulation Resistance Monitoring	Yes			
Ground Fault Monitoring	Yes			
Grid Monitoring	Yes			
PV String Monitoring	Yes			
Surge Protection	Type II			
AFCI Protection	Optional			
Communication				
Display	LCD / LED+APP			
Communication	Standard: RS485 Optional: WiFi / GPRS / Ethernet			
Standard Compliance				
Certification	IEC/EN 62109-1/2, IEC/EN 61000-6-1/3, IEC60068, IEC61683, EN 50549, IEC61727/IEC62116, CEI 0-21, C10/C11, VDE 4105, VDE 0124, RD244, UNE217001, UNE217002, NC RfG, AS4777, NB/T 32004, BIS			
General Data				
Dimensions (W x H x D)	534 x 440 x 220 mm			
Weight	24kg			
Operating Temperature Range	-30° C ~ +60° C			
Cooling Method	Smart Cooling			
Protection Degree	IP66			
Max. Operating Altitude	4000 m			
Relative Humidity	0 ~ 100%			
Topology	Transformerless			
Night Power Consumption	< 1 W			

SOLARICS

Three Phase On-Grid Solar Inverter

XG30-40KTR



**Efficient
Higher Revenue**

- 3-4 MPP Trackers, high single circuit tracking accuracy, fast dynamic response
- 160% DC Input Oversizing
- Maximum efficiency of 98.6%. Wide MPPT voltage range: 200V-1000V
- Compatible with high power modules



**Intelligent
Simple O&M**

- Smart I-V Curve Diagnosis Function: locate PV string faults accurately and automatically detect faults
- Intelligent Fault Detection: AC side voltage and current waveforms real-time recorded, fast fault location
- Support RS485 (WiFi/GPRS/Ethernet optional): remote monitoring and operation via PC or mobile phones



**Reliable
Worry Free**

- IP66 Protection degree: support outdoor installation
- DC & AC Type II SPD: prevent lightning damage
- AFCI Function (Optional): when an arc-fault is detected the inverter immediately stops operation

	XG30KTR	XG33KTR	XG36KTR	XG40KTR
Input (DC)				
Max. Input Power	48kW	52.8kW	57.6kW	64kW
Max. Input Voltage	1100V			
Start Voltage	250V			
Rated Input Voltage	600V			
Full-load MPP Voltage Range	500V ~ 800V			
MPPT Voltage Range	200V ~ 1000V			
Number of MPP Trackers	3		4	
String per MPPT	2			
Max. Current per MPPT	26A			
Max. Short Circuit Current per MPPT	32A			
Output (AC)				
Max. Output Current	48.3A	53A	57.8 A	64.3 A
Rated Output Power	30kW	33kW	36 kW	40 kW
Max. Output Power	33.3kVA	36.6 kVA	39.6 kVA	44 kVA
Rated Grid Frequency	50 Hz / 60 Hz			
Rated Grid Voltage	230Vac / 400Vac, 3L / N / PE			
Power Factor	>0.99(0.8 leading ~ 0.8 lagging)			
THDi	<3% (Rated Power)			
Efficiency				
Max. Efficiency	98.60%			
European Efficiency	98.50%			
MPPT Efficiency	99.90%			
Protection				
DC Reverse Polarity Protection	Yes			
Anti-islanding Protection	Yes			
AC Short Circuit Protection	Yes			
Residual Current Monitoring Unit	Yes			
Insulation Resistance Monitoring	Yes			
Ground Fault Monitoring	Yes			
Grid Monitoring	Yes			
PV String Monitoring	Yes			
Surge Protection	Type II			
AFCI Protection	Optional			
Communication				
Display	LCD / LED+APP			
Communication	Standard: RS485 Optional: WiFi / GPRS / Ethernet			
Standard Compliance				
Certification	IEC/EN 62109-1/2, IEC/EN 61000-6-1/3, EN50549, IEC61727/IEC62116, CEI 0-21,C10/C11, VDE 4105, VDE 0124, RD244, UNE217001, UNE217002, NC RfG, TOR Erzeuger, AS4777, NRS097-2-1, NB/T 32004, BIS			
General Data				
Dimensions (W x H x D)	600 x 430 x 230 mm			
Weight	30kg		32kg	
Operating Temperature Range	-30° C ~ +60° C			
Cooling Method	Smart Cooling			
Protection Degree	IP66			
Max. Operating Altitude	4000 m			
Relative Humidity	0 ~ 100%			
Topology	Transformerless			
Night Power Consumption	< 1 W			

SOLARICS
Three Phase On-Grid Solar Inverter
XG50-70KTR



**Efficient
Higher Revenue**

- 4 MPP Trackers, high single circuit tracking accuracy, fast dynamic response and higher power generation
- 160% DC Input Oversizing
- Wide MPPT voltage range: 200V-1000V
- Compatible with high power modules



**Intelligent
Simple O&M**

- Smart I-V Curve Diagnosis Function: locate PV string faults accurately and automatically detect faults
- Intelligent Fault Detection: AC side voltage and current waveforms real-time recorded, fast fault location
- Support RS485 (WiFi/GPRS/Ethernet optional): remote monitoring and operation via PC or mobile phones



**Reliable
Worry Free**

- IP66 Protection degree: support outdoor installation
- DC & AC Type II SPD: prevent lightning damage
- AFCI Function (Optional): when an arc-fault is detected the inverter immediately stops operation

	XG50KTR	XG50KTRL	XG60KTR	XG60KTRL	XG66KTRL	XG70KTRL
Input (DC)						
Max. Input Power	80kW		96kW		105.6kW	112kW
Max. Input Voltage	1100V					
Start Voltage	250V					
Rated Input Voltage	600V				700V	
Full-load MPP Voltage Range	520V ~ 850V				600V ~ 850V	
MPPT Voltage Range	200V ~ 1000V					
Number of MPP Trackers	4					
Number of string per MPPT	3 / 2 / 3 / 2			3 / 3 / 3 / 3		
Max. Current per MPPT	39A / 26A / 39A / 26A			39A		
Max. Short Circuit Current per MPPT	48A / 32A / 48A / 32A			48A		
Output (AC)						
Max. Output Current	79.7A	66.2A	95.6A	79.4A	87.4A	92.6A
Rated Output Power	50kW		60kW		66kW	70kW
Max. Output Power	55kVA		66kVA		72.6kVA	77kVA
Rated Grid Frequency	50Hz / 60Hz					
Rated Grid Voltage	230Vac / 400Vac	277Vac / 480Vac	230Vac / 400Vac	277Vac / 480Vac		
Power Factor	>0.99 (0.8 leading ~ 0.8 lagging)					
THDi	<3% (Rated Power)					
Efficiency						
Max. Efficiency	98.70%		98.80%			
European Efficiency	98.40%				98.50%	
MPPT Efficiency	99.90%					
Protection						
DC Reverse Polarity Protection	Yes					
Anti-islanding Protection	Yes					
AC Short Circuit Protection	Yes					
Residual Current Monitoring Unit	Yes					
Insulation Resistance Monitoring	Yes					
Ground Fault Monitoring	Yes					
Grid Monitoring	Yes					
PV String Monitoring	Yes					
Surge Protection	Type II					
AFCI Protection	Optional					
Communication						
Display	LCD / LED+APP					
Communication	Standard: RS485 Optional: WIFI / GPRS / Ethernet					
Standard Compliance						
Certification	IEC/EN 62109-1/2, IEC/EN 61000-6-1/3, EN50549, IEC61727/IEC62116, CEI 0-21, CEI 0-16, C10/C11, VDE 4105, VDE 0124, G99, RD244, UNE217001, UNE217002, NC RfG, NRS097-2-1, NB/T 32004, BIS					
General Data						
Dimensions (W x H x D)	650 x 450 x 260 mm					
Weight	50kg					
Operating Temperature Range	-30° C ~ +60° C					
Cooling Method	Smart Cooling					
Protection Degree	IP66					
Max. Operating Altitude	4000m					
Relative Humidity	0 ~ 100%					
Topology	Transformerless					
Night Power Consumption	<1W					

SOLARICS

Three Phase On-Grid Solar Inverter

XG100-136KTR



**Efficient
Higher Revenue**

- 9-12 MPP Trackers, high single circuit tracking accuracy, fast dynamic response and higher power generation
- 150% DC Input Oversizing
- Maximum efficiency of 98.7%. Wide MPPT voltage range: 180V-1000V
- Compatible with high power modules



**Intelligent
Simple O&M**

- Smart I-V Curve Diagnosis Function: locate PV string faults accurately and automatically detect faults
- Intelligent Fault Detection: AC side voltage and current waveforms real-time recorded, fast fault location
- Support RS485 (WiFi/DRM/Bluetooth optional): remote monitoring and operation via PC or mobile phones



**Reliable
Worry Free**

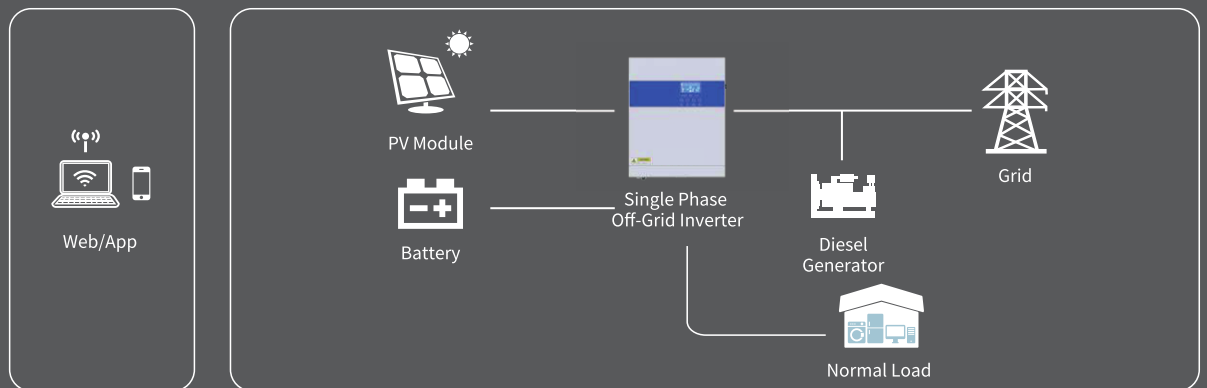
- IP66 Protection degree: support outdoor installation
- DC & AC Type II SPD: prevent lightning damage
- AFCI Function (Optional): when an arc-fault is detected the inverter immediately stops operation

	XG100KTR-F	XG110KTR-F	XG136KTR-LF	XG136KTR-XF
Input (DC)				
Max. Input Power	150kW		160kW	
Max. Input Voltage	1100V			
Start Voltage	250V			
Rated Input Voltage	620V		730V	780V
Full-load MPP Voltage Range	530V ~ 850V		560V ~ 850V	
MPPT Voltage Range	180V ~ 1000V			
Number of MPP Trackers	9	10	12	
Number of string per MPPT	2			
Max. Current per MPPT	30A			
Max. Short Circuit Current per MPPT	40A			
Output (AC)				
Max. Output Current	158.8A	174.6A		160.4A
Rated Output Power	100kW	110kW	136kW	
Max. Output Power	110kVA	121kVA	150kVA	
Rated Grid Frequency	50Hz / 60Hz			
Rated Grid Voltage	230Vac / 400Vac, 3L / N / PE, 3L / PE		277Vac / 480Vac, 3L / N / PE, 3L / PE	311Vac / 540Vac, 3L / N / PE, 3L / PE
Power Factor	>0.99 (0.8 leading ~ 0.8 lagging)			
THDi	<3% (Rated Power)			
Efficiency				
Max. Efficiency	98.70%			
European Efficiency	98.50%			
MPPT Efficiency	99.90%			
Protection				
DC reverse polarity protection	Yes			
Anti-islanding protection	Yes			
AC short circuit protection	Yes			
Residual current monitoring unit	Yes			
Insulation resistance monitoring	Yes			
Ground fault monitoring	Yes			
Grid monitoring	Yes			
PV string monitoring	Yes			
Surge protection	Type II			
AFCI protection	Optional			
Communication				
Display	LCD / LED+APP			
Communication	Standard: RS485 Optional: WiFi / DRM / Bluetooth			
Standard Compliance				
Certification	IEC/EN 62109-1/2, IEC/EN 61000-6-1/3, IEC/EN 61000-6-2/4, EN50549, IEC61727/IEC62116, CEI 0-21/CEI 0-16, C10/C11, VDE 4105, VDE 0124, G99, RD244, UNE217001, UNE217002, NC RfG, TOR Erzeuger, NRS097-2-1, NB/T 32004			
General Data				
Dimensions (W x H x D)	1050 x 660 x 330 mm			
Weight	95kg	98kg	101kg	
Operating Temperature Range	-30° C ~ +60° C			
Cooling Method	Smart forced air cooling			
Protection Degree	IP66			
Max. Operating Altitude	4000m			
Relative Humidity	0 ~ 100%			
Topology	Transformerless			
Night Power Consumption	<1W			

SOLARICS

Off-Grid PV Solution

Residential Off-grid PV Solution



SOLARICS

Single Phase Off-Grid Solar Inverter

Xn3024



**Efficient
Higher Revenue**

- Built-in 80A MPPT solar charge
- Wide PV input voltage range



**Intelligent
Simple O&M**

- Support cold start
- Intelligent fan speed adjustment
- Over load / over temperature / short circuit protection
- Smart battery charger design, optimize battery performance



**Flexible
Abundant Configuration**

- Support grid / generator input
- Compatible with lithium battery
- Multiple charging voltage levels for different batteries
- Multiple work mode, support AC priority, solar priority

	XN3024
Rated Power	3200VA/3000W
Input	
Voltage	230Vac
Selectable Voltage Range	170Vac~280Vac (for personal computers) 90Vac~280Vac (for home appliances)
Frequency Range	50Hz / 60Hz (auto sensing)
Output	
AC Voltage Regulation (Batt. Mode)	230Vac±5%
Surge Power	6400VA
Overload Capability	5s@ ≥ 150% load; 10s@110%~150% load
Efficiency (Peak)	94%
Transfer Time	10ms (for personal computers); 20ms (for home appliances)
Waveform	Pure Sine Wave
Battery	
Battery Nominal Voltage	24Vdc
Floating Charge Voltage	27Vdc
Overcharge Protection	31Vdc
Solar Charger & AC Charge	
Solar Charger Type	MPPT
Maximum PV Array Power	3000W
Solar Charger Type	240Vdc
MPPT Range	90Vdc ~ 430Vdc
Maximum PV Array Open Circuit Voltage	450Vdc
Maximum Utility Charge Current	60A
Maximum Solar Charge Current	80A
Protection	
Protection	AC Short Circuit Protection, AC Over Current Protection, Over Temperature Protection, etc.
Communication	
Display	LCD
Communication Port	RS232
Standard Compliance	
Safety/ EMC	CE
General Data	
Dimension (W x H x D)	282 x 348 x 105 mm
Net Weight	5.5kg
Protect Degree	IP21
Operating Temperature	0° C ~ +55° C
Storage Temperature	-15° C ~ +60° C
Humidity	5%~95% (non-condensing)

Single Phase Off-Grid Solar Inverter **Xn5548 & XN5548-P**



**Efficient
Higher Revenue**

- Built-in 110A MPPT solar charge
- Wide PV input voltage range



**Intelligent
Simple O&M**

- Over load / over temperature / short circuit protection
- Smart battery charger design, optimize battery performance



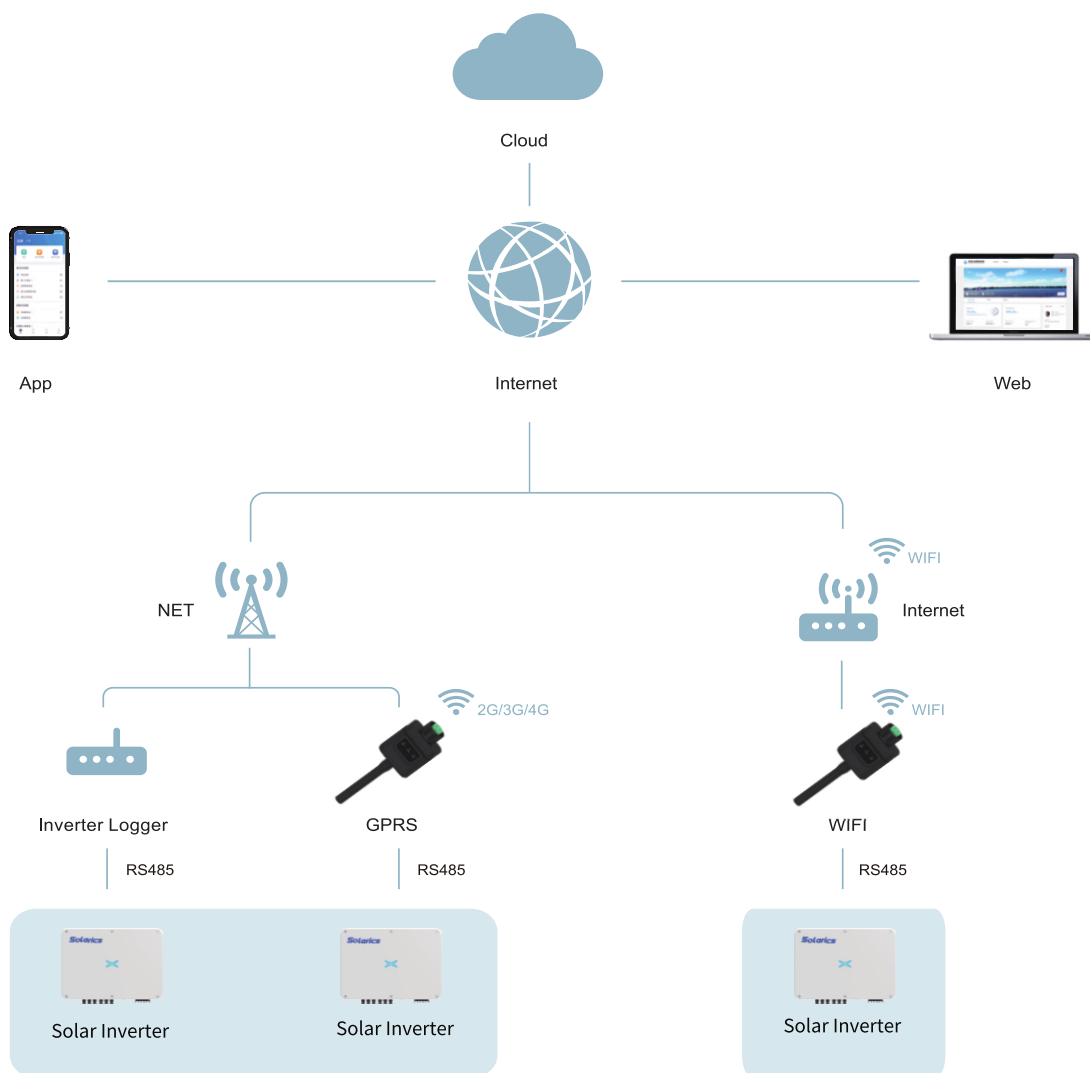
**Flexible
Abundant Configuration**

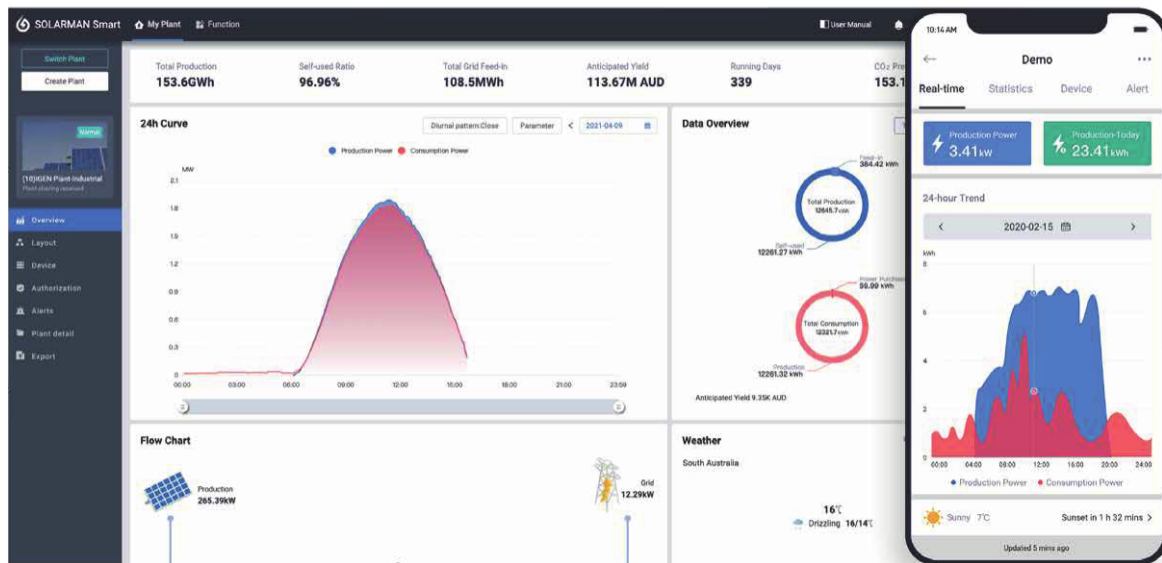
- Support grid / generator input
- Compatible with lithium battery
- Up to 6 units in parallel (P model)
- Multiple charging voltage levels for different batteries
- Multiple work mode, support AC priority, solar priority

Rated Power	5500VA/5500W	
Voltage	230Vac	
Selectable Voltage Range	170Vac~280Vac (for personal computers) 90Vac~280Vac (for home appliances)	
Frequency Range	50Hz / 60Hz (auto sensing)	
AC Voltage Regulation (Batt. Mode)	230Vac±5%	
Surge Power	11000VA	
Overload Capability	5s@ ≥ 150% load; 10s@110%~150% load	
Efficiency (Peak)	94%	
Transfer Time	10ms (for personal computers); 20ms (for home appliances)	
Waveform	Pure Sine Wave	
Battery Nominal Voltage	48Vdc	
Floating Charge Voltage	52Vdc	
Overcharge Protection	62Vdc	
Solar Charger Type	MPPT	
Maximum PV Array Power	6000W	
MPPT Range	120Vdc~450Vdc	
Maximum PV Array Open Circuit Voltage	500Vdc	
Maximum Utility Charge Current	80A	
Maximum Solar Charge Current	110A	
Protection	AC Short Circuit Protection, AC Over Current Protection, Over Temperature Protection, etc.	
Display	LCD	
Communication Port	RS232 / RS485	
Safety/ EMC	CE	
Dimension (W x H x D)	297 x 472 x 133 mm	
Net Weight	10.5kg	
Protect Degree	IP21	
Operating Temperature	0° C ~ +55° C	
Storage Temperature	-15° C ~ +60° C	
Humidity	5%~95% (non-condensing)	
Parallel	No	Up to 6 pcs

SOLARICS

Monitoring Solution





Monitoring Platform

SOLARMAN Business

For Device Manufacturer:

- Device Control and Firmware Upgrade
- Data Processing
- Authorization Management
- Batch Task
- Device Classification

For Service Provider:

- Plentiful Information
- Intelligent AI Diagnosis
- Most Cost-effective Virtual Weather Station
- Simple Drag-and-Drop
- Intelligent and Intuitive Alerts

SOLARMAN Smart

Advantage:

- All-round Monitoring
- Create a Plant within 1 min
- Timely Alert Report
- Intuitive System Layout
- Flexible Plant Management

SOLARICS

THE ENERGY
TECHNOLOGY OF THE FUTURE



Email Address :

sales@solarics.eu

Address Location :

Solarics Holding AG Girixweg 55000 Aarau - Switzerland



Subject to changes and errors. The information given in this document only contains general descriptions and/or performance features which may not always specifically reflect those described, or which may undergo modification in the course of further development of the products. The requested performance features are binding only when they are expressly agreed upon in the concluded contract.

All product designations may be trademarks or other rights of Bluetech, its affiliated companies or other companies whose use by third parties for their own purposes could violate the rights of the respective owner.